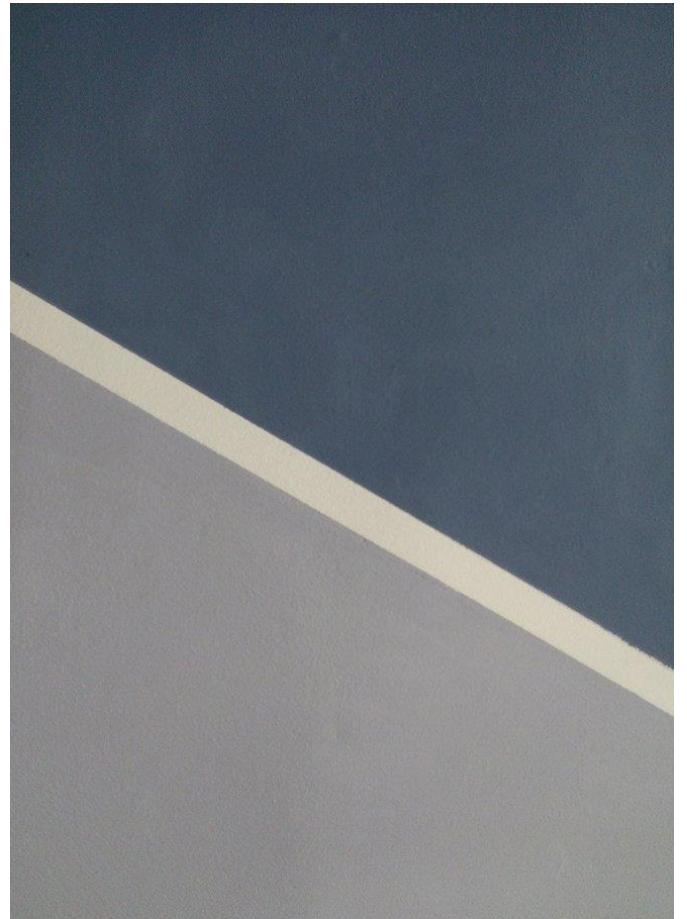
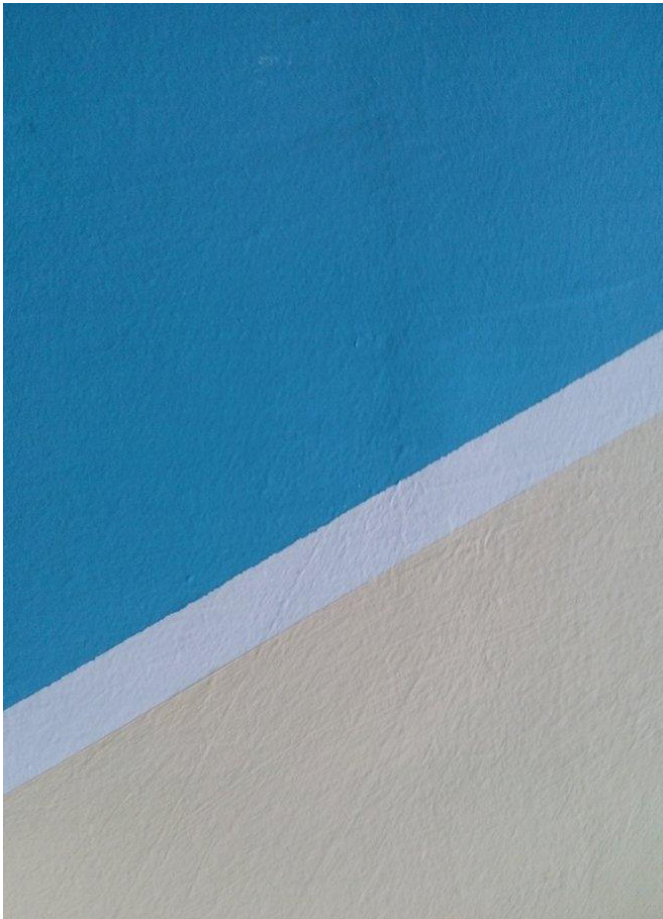
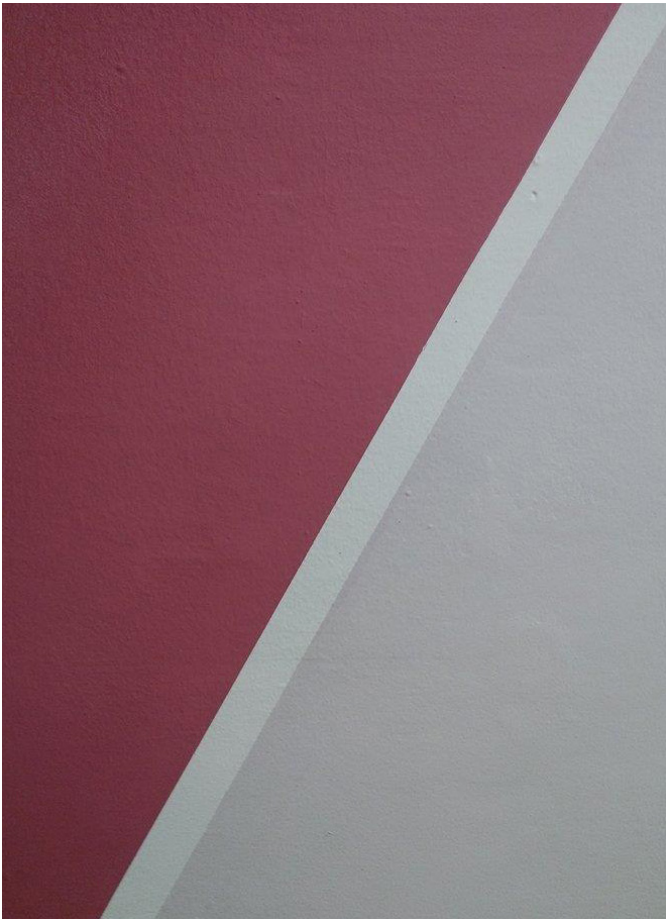


tikka wayfinding

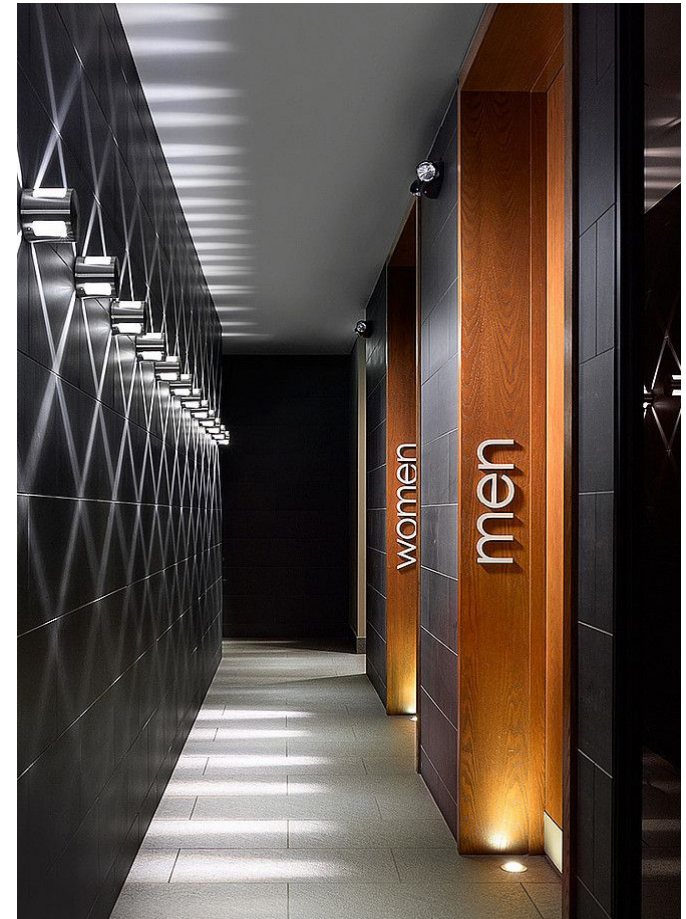
Colours

Changing the colour according to the corridor walls to help the viewers be less confused.



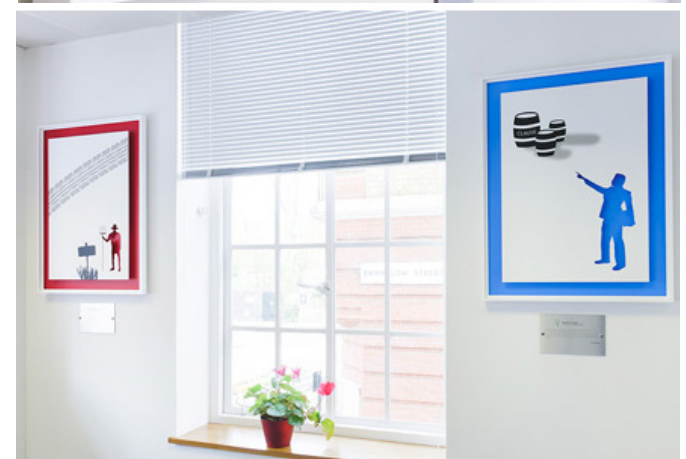
Indoor Signage

Add the name of each course by the door of each class.



Indoor Signage

Creative signage through the corridors to make it easier for the viewer to move around.



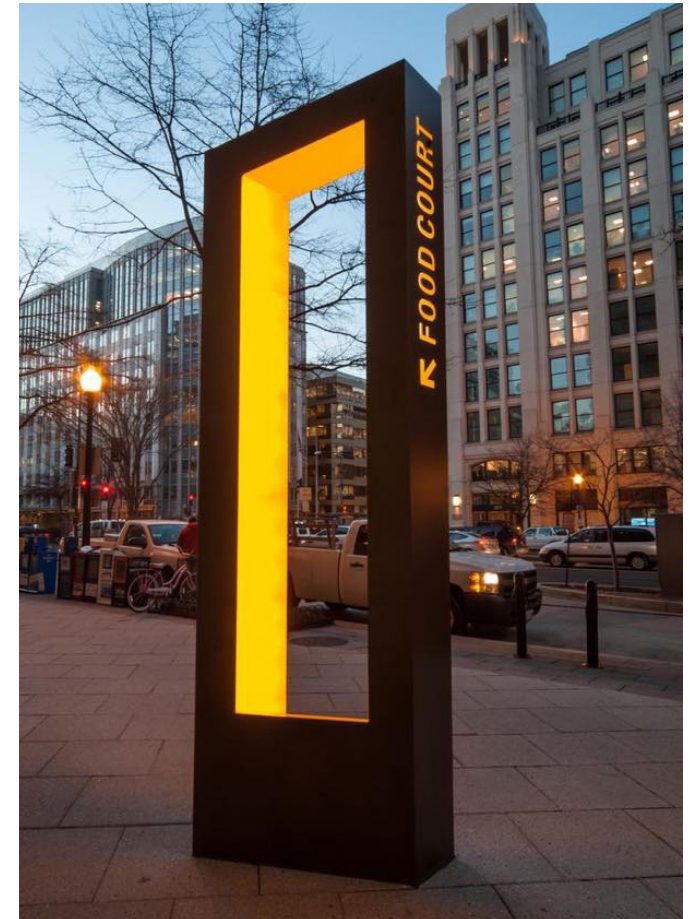
Outdoor Signage

Create signage which is fun, creative and corresponding with the brand to be more appealing to the audience.



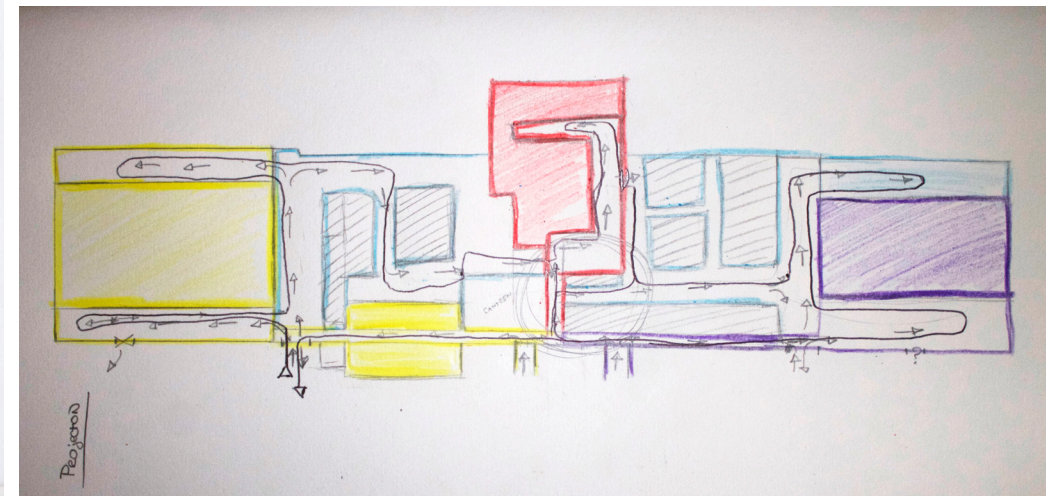
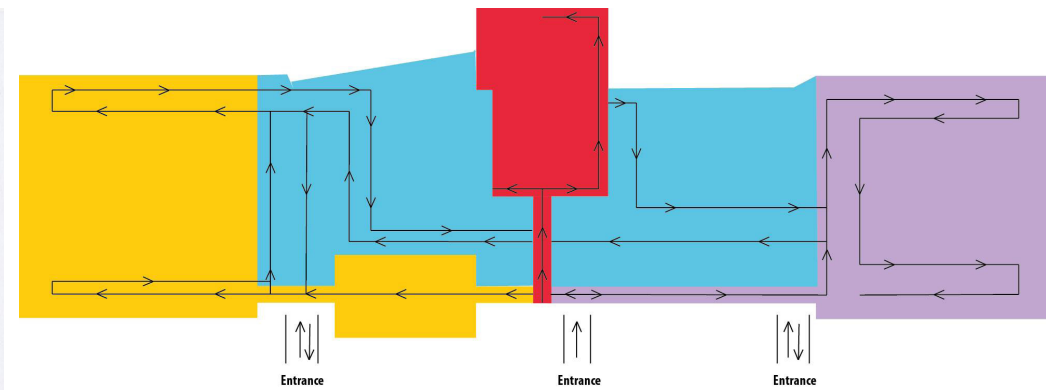
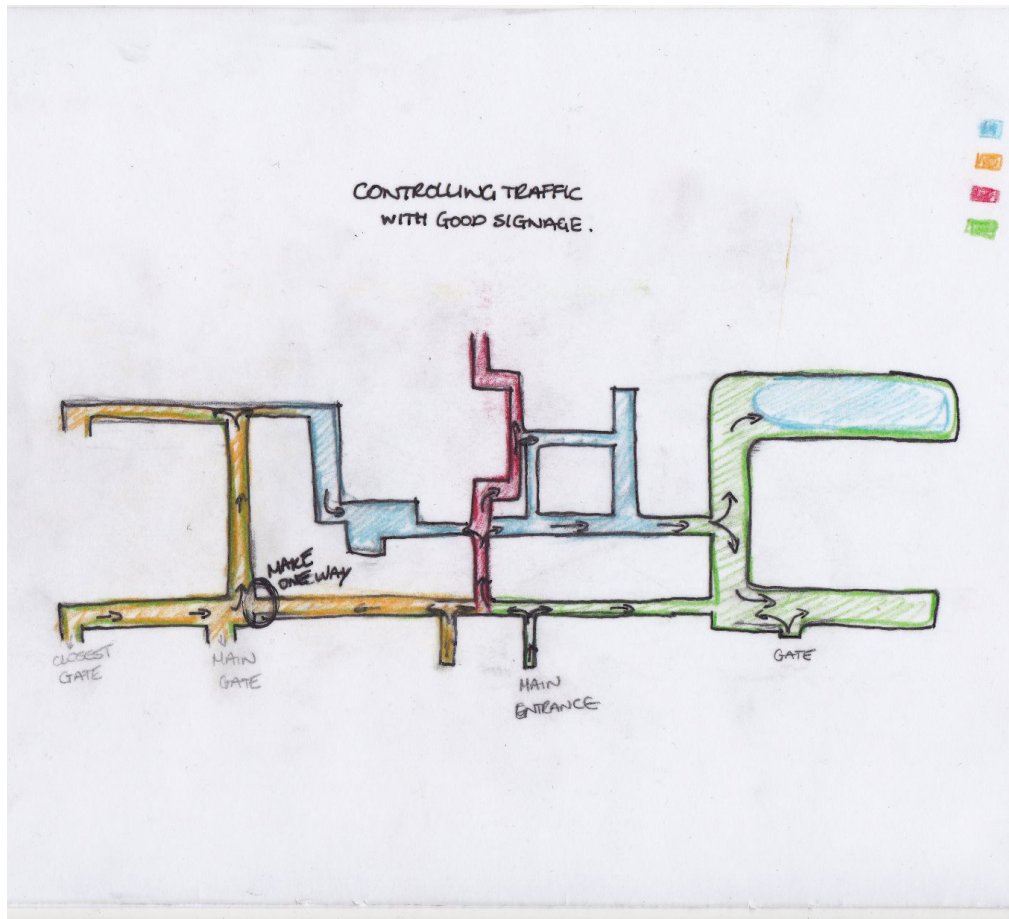
Lights + Colours

Use light and colours to make a creative and effective wayfinding to give the school a proficient use of an exhibition material.



Routes

We plan to create a route for the viewers to regulate the movement with the wayfinding system.



Visually Impaired

Use textured material on the floor to make a path for the visually impaired.



Thank You